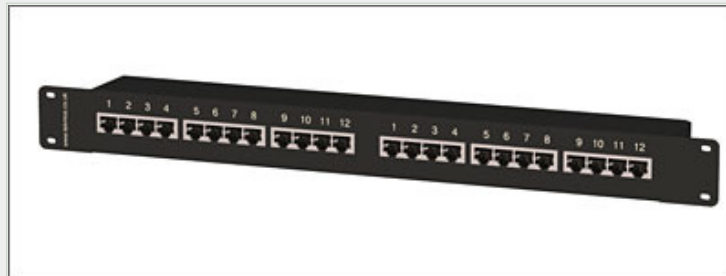




24 Port Shielded RJ45 to Telco Through Coupler Panel



Description

The Tekmos TKPP.S24.RJ Through Coupler Panel provides interconnectivity between Telco connectors and individual RJ45 circuits. The Panel consists of a Black Powder Coated 1U high 19" Rack mountable Zintec chassis. Internally there are 2 PCBs, providing connections from the RJ45s to the Telcos.

Mounted to the front are 24 Shielded RJ45 Female connectors, numbered 1 through 12 for each Telco. All markings are silk-screened.

Wiring Scheme

Option A			
RJ45	PIN	Telco	PIN
1	1	1	26
1	2	1	1
1	4	1	27
1	5	1	2
2	1	1	28
2	2	1	3
2	4	1	29
2	5	1	4
etc	etc	etc	etc

[Click Here to see Option B Wiring Scheme](#)

Part Numbers	Description
TKPP.S24.RJ.A	24 Port RJ45 to Telco Through Coupler (Wiring Scheme A)
TKPP.S24.RJ.B	24 Port RJ45 to Telco Through Coupler (Wiring Scheme B)