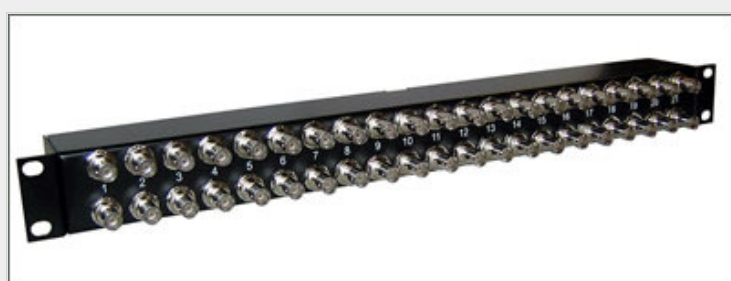




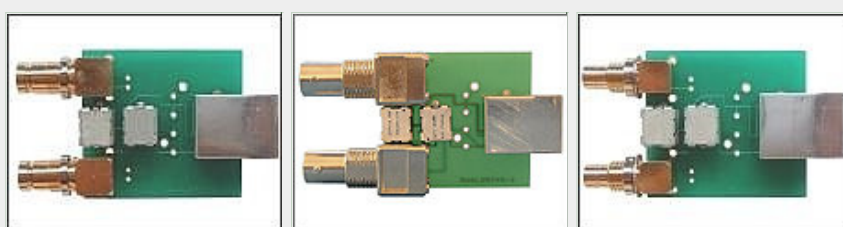
## 21 x Dual Coax to RJ45 / RJ48 Balun Panel



### Description

Available with BNC, 1.6/5.6 (Small Siemens) or Type43 (BT) coaxial connectors. The Tekmos G.703 Modular Dual Path Balun Panel matches the impedance and signal characteristics of up to 21 dual 75 ohm coax connectors (21 x E1 Circuits) with up to 21 RJ45 / RJ48 twisted pair connections. The Panel Housing assembly fits in a single 1U 19" Rack, alternative mounting ears are available for 23" racks. The 19" mounting ears are reversible, allowing either the Coax or the RJ45 / RJ48 connections, to be viewed as the front.

The panels modular construction allows you add up to 21 separate G.703 Balun Modules in a 1U 19" rack mountable chassis or they can be purchased in the fully populated format shown above. This modular approach provides cost effective solutions, with a proven growth path.



### Features and Benefits

- Resolves the 75/120 ohm impedance mis-match between twisted pair equipment and coax cabling schemes.
- A cost effective, space efficient, robust, reliable and proven method of impedance matching 75 ohm coax to 120 ohm twisted pair.
- Industry standard Type43, 1.6/5.6 and RJ45 / RJ48 Connectors allow convenient and flexible cabling.
- The high density design converts up to 21 x E1 Circuits in only one 19" Rack Unit (1.75" 44mm).
- Designed for E1/T1 applications
- CCITT G.703 Compliant
- No Power Required
- 5 Year Parts and Labour Warranty
- Complete with all necessary rack mount accessories

### Specifications

75 ohm Connections	Dual BNC (Male or Female), 1.6/5.6 or Type43
120 ohm Connections	Shielded RJ45
Transmission Line	CCITT G.703 or G.704 (transparent)
Speed	2.048Mit/s (E1) and 8.448Mbit/s (E2)
Cross Talk	Better than -50dB at 1 to 10Mhz
Insertion Loss	Less than 0.35dB
Return Loss	Better than 18dB
Dimensions	482 W x 50 D x 44.5 mm H (19" x 2" x 1.74")
Wiring Scheme	1 - Tx Tip, 2 - Tx Ring, 4 - Rx Tip, 5 - Rx Ring
Materials	Case - Zintec, Black Powder Coated
Weight	1.5Kg
Warranty	5 Years, Parts and Labour
MTBF	Estimated 30 Years
Operating Temperature	0° to 50° C
Power Requirements	None
Harmonisation Code	8544 - 42 - 10

Part Numbers	Description
TKPP.42.03	21 x E1 BNC to RJ45 / RJ48 Balun Panel
TKPP.42.02	21 x E1 1.6/5.6 to RJ45 / RJ48 Balun Panel
TKPP.42.01	21 x E1 Type43 to RJ45 / RJ48 Balun Panel
TKPPE21RJ.00	21 Position Chassis BNC
TKPPE21RJ.12	21 Position Chassis Type43, 1.6/5.6
TKE1BA.03	Dual BNC to RJ45 / RJ48 Balun Adaptor
TKE1BA.02	Dual 1.6/5.6 to RJ45 / RJ48 Balun Adaptor
TKE1BA.01	Dual Type43 to RJ45 / RJ48 Balun Adaptor
TKBPG.13.BK	Blanking Plug, 13mm Black BNC
TKBPG.09.BK	Blanking Plug, 9mm Black Type43, 1.6/5.6