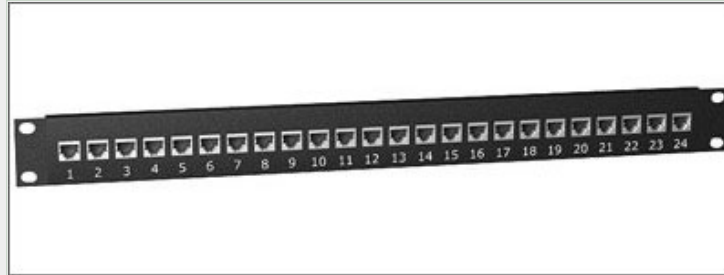




24 Port Category 5e, Shielded RJ45 Through Coupler 1 U Patch Panel



Description

A quick, convenient and very cost effective method of interconnecting 24 x RJ45 Category 5e circuits. Can be used with T-568-A or T-568-B wiring schemes. Meets ANSI/TIA/EIA-568-A-5 requirements for Category 5e

Part Numbers	Description
TK-UTC45-024-AOC	24 Port Category 5e Shielded RJ45